

>>>> **NEO**
Medium-duty Turning



Perfect Value for Your Investment

Series: NEO+ | NEO 2050



www.bfwindia.com

Neo-

BFW
Bharat Fritz Werner

Medium-duty Turning - NEO Series

BFW HTL platform NEO series been developed to achieve precision with productivity for medium-duty turned components. The right turning platform for mass production jobs of Automotive, Aerospace & General Engineering. The NEO horizontal 2-axis turning centres are available in A2-6 spindle configurations with 300 mm maximum turning diameter. These set of machines have the versatility for most turning applications:

- Precision LM guides for X & Z axes
- High precision ball screws for X & Z axes
- Enabled for Automation
- Ergonomically designed operator panel
- The platform is first-of-its-kind in India with a distinctive feature offering total isolation of tramp oil from coolant. To ensure better accuracy & lesser running cost.

many more...

Hydraulic Turret



Chuck



Integrated robot Automation with five Neo Machines setup for batch production



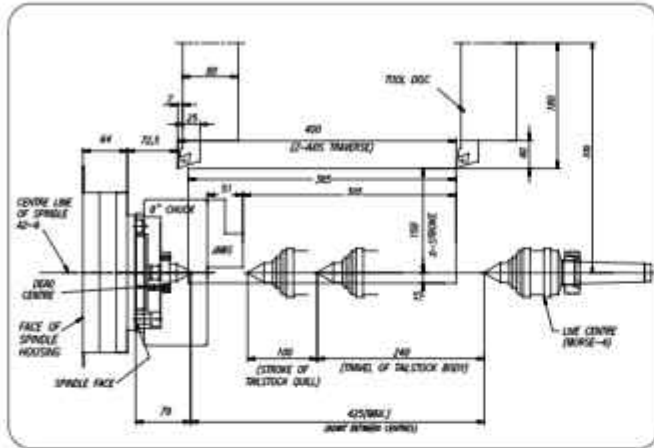
Integrated Robot Automation with Two NEO Turning for companion flange



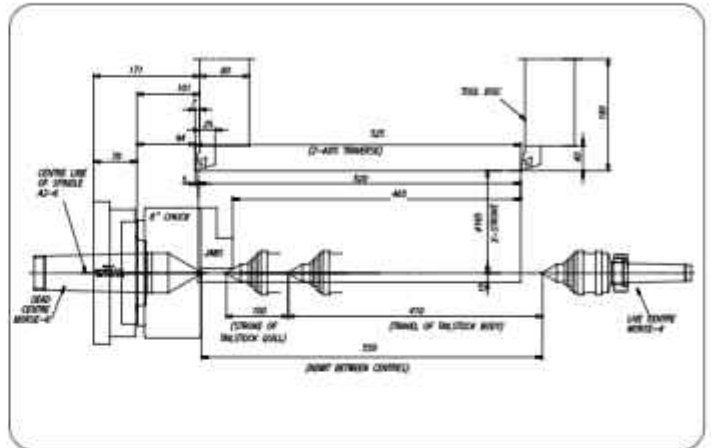
16 NEO+ machines single instance installation at GOVT organization for batch production

Moving Range (Turning) Diagrams

NEO+

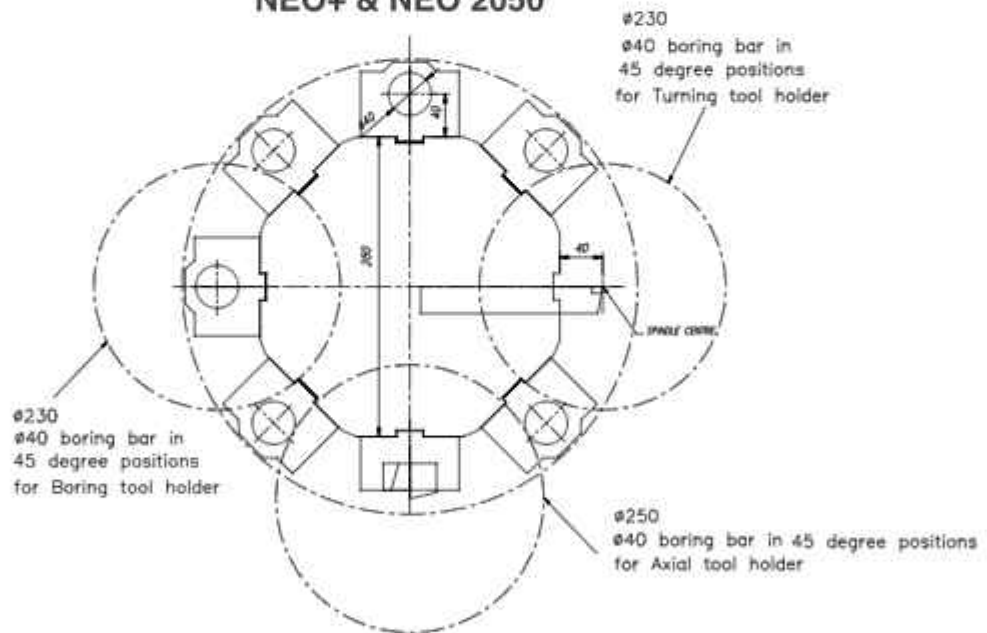


NEO 2050



Interference Diagram

NEO+ & NEO 2050

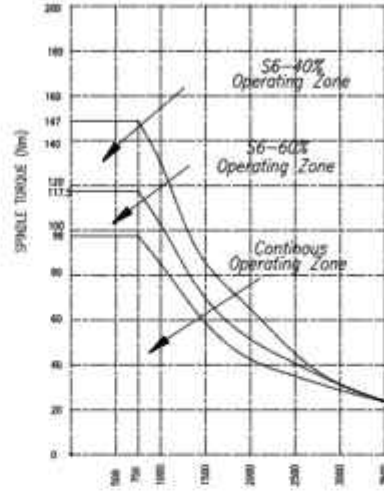
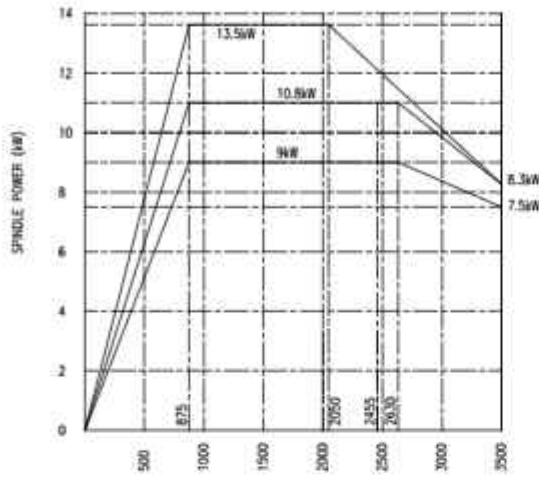


Applications

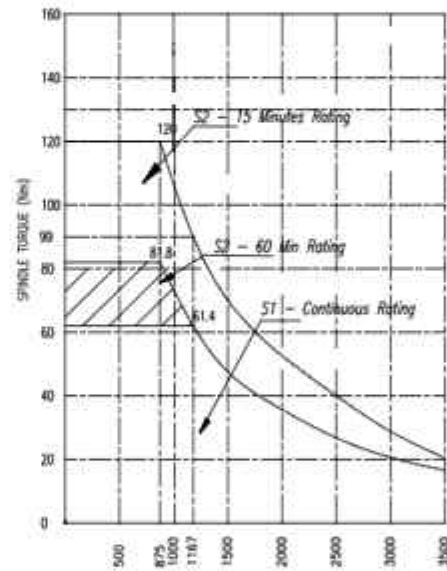
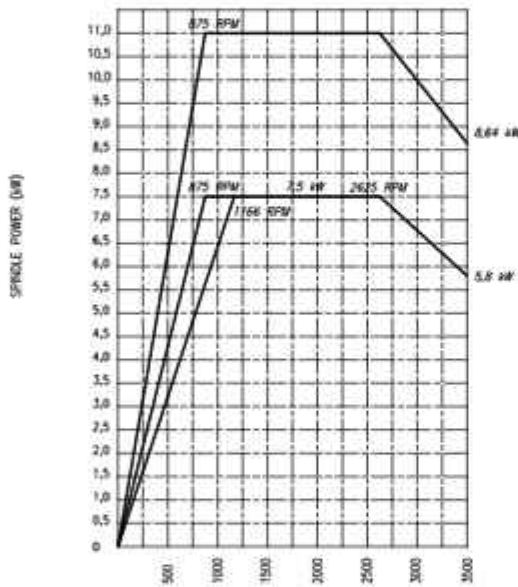


Spindle Characteristics

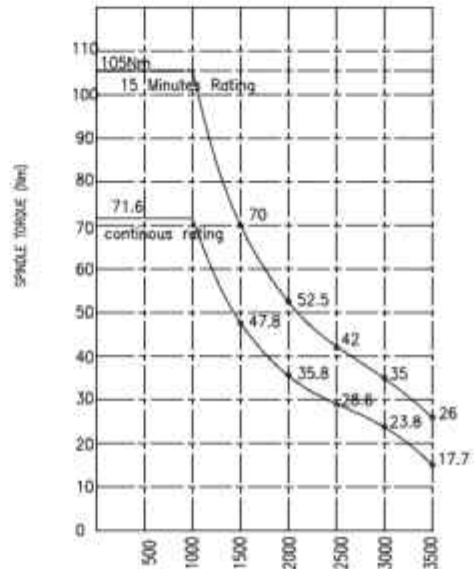
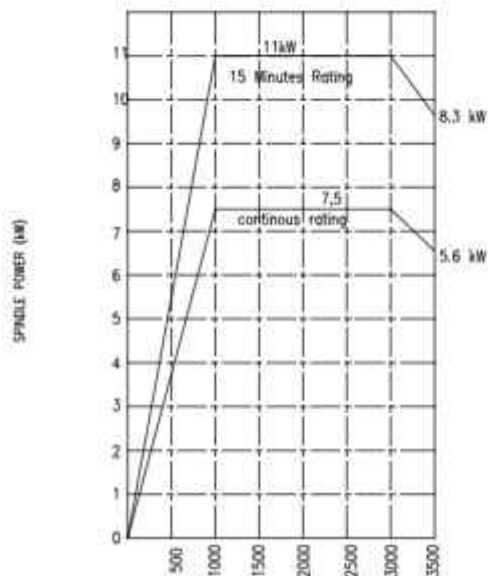
NEO +/ NEO 2050 (Siemens - 9/13.5 kW)



NEO +/ NEO 2050 (Fanuc - 7.5/11 kW)



NEO +/ NEO 2050 (Mitsubishi - 7.5/11 kW)



Technical Specifications

Specifications	Unit	NEO+	NEO 2050
Capacity:			
Swing over bed	mm	500	500
Swing over carriage	mm	270	300
Admit between center distance	mm	425	550
Standard turning diameter (Full length)*	mm	270	300
Max. turning diameter (Disc - 80mm length)*	mm	300	330
Interference free turning diameter (Tool collision dia with adjacent tool pocket)*	mm	228	228
Max. Turning length between Tailstock & Headstock center	mm	400	520
Max. Turning length from chuck hard jaw face to tailstock center*	mm	305	465
Work Holding & Tool Holding:			
Standard chuck size	mm	200	200
Bar capacity	mm	51	51
Turret indexing mechanism	type	Hydraulic	Hydraulic
Turret center height	mm	80	80
Turning tool shank size (B x W)	mm	25 x 25	25 x 25
Number of tools	No.	8	8
Boring tool holder size (Dia)	mm	40	40
Spindle:			
Spindle nose	type	A2-6	A2-6
Spindle bore	mm	63	63
No of spindle bearing front/ rear	No.	3/2	3/2
Spindle bearing size front/ rear	mm	100/ 90	100/ 90
Spindle speed	rpm	3500	3500
CNC System: Fanuc/ Siemens/ Mitsubishi			
Spindle motor power continuous/ intermittent rating	Kw	Fanuc 7.5/ 11 Mitsubishi 7.5/ 11 Siemens 9/ 13.5	Fanuc 7.5/ 11 Mitsubishi 7.5/ 11 Siemens 9/ 113.5
Full power range	rpm	Fanuc 1167 - 2335 Mitsubishi 1167 - 2625 Siemens 875 - 2625	Fanuc 1167 - 2335 Mitsubishi 1167 - 2625 Siemens 875 - 2625
Traverse:			
Cross slide movement (X axis)	mm	165 (+150/-15)	185 (+170/-15)
Longitudinal movement (Z axis)	mm	400	525
Rapid traverse (X axis)	m/min	30	30
Rapid traverse (Z axis)	m/min	30	30
Cutting feed rate	m/min	0 - 10	0 - 10
Tailstock			
Quill diameter	mm	80	80
Quill traverse	mm	100	100
Base traverse	mm	240	400
Quill taper	type	MT-4	MT-4
Quill thrust force - max @15 bar	kgf	500	300
Fluid System:			
Coolant tank capacity	ltr	100	100
Coolant pump capacity	lpm	160	160
Lubrication tank capacity	ltr	2.7	2.7
Hydraulic tank capacity	ltr	32	32
Hydraulic pump capacity	lpm	16	16
Hydraulic system pressure	bar	35	35
Accuracy As Per ISO 230-2:			
Positioning X / Z	mm	0.007	0.007
Repeatability X / Z	mm	0.005	0.005
Machine Installations:			
Machine dimension W x D X H -	mm	2100 x 1500 x 1600	2400 x 1500 x 1600
Total connected load	kVA	18	18
Machine weight	hgs	~ 2900	~ 3200

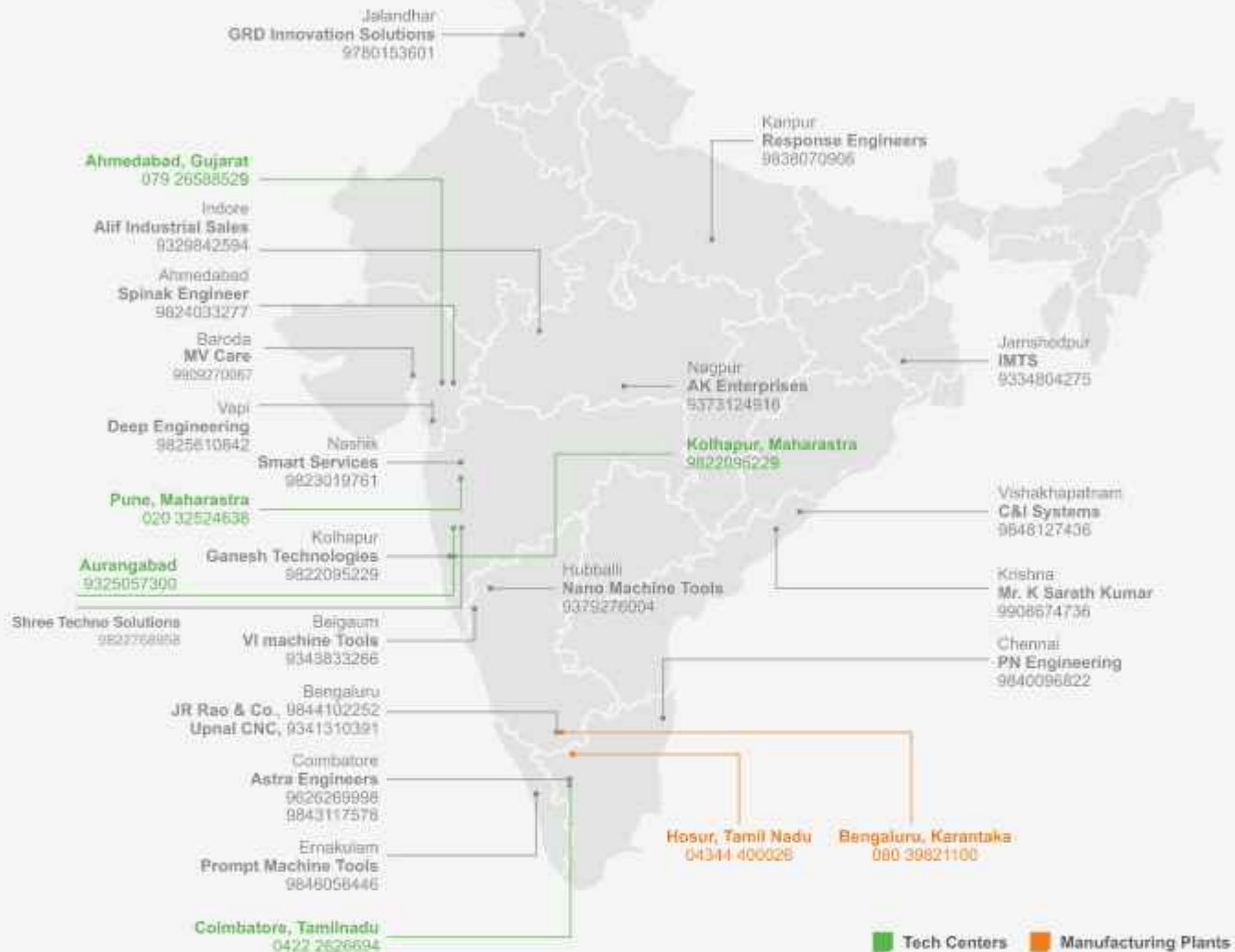
Standard Features

- Ball type LM guide-ways (Class H)
- Precise ball screws (Class 3)
- Automatic centralized lubrication system
- AC servo drives
- Coolant tank cum chip tray
- Hydraulic power pack
- Belt-driven spindle
- Absolute encoder
- 10.4 colour display - Fanuc Oi TF/ Siemens
- 8.4 color display - Mitsubishi
- Rigid tapping
- Linear, circular interpolation
- 8-station hydraulic turret
- Operator door
- Tri-colour lamp
- Machine alarm diagnostics
- Energy saving functions
- 3-jaw self centering chuck
- Solid rotary cylinder
- Tail-stock with programmable quill
- AC for electrical cabinet
- Mechanical tool kit
- Machine lamp
- Tool display
- Leveling pads

Optional Features

- Chip conveyor
- 12-station hydraulic turret
- 2 & 4 jaw self-centering chuck
- Collet chuck
- Auto door
- Bar feeder system
- Part catcher
- Tool touch probe
- work probe
- Hollow cylinder
- Gantry / Robotics automation
- Tooling up solutions
- Industry 4.0 integrated system IRIS

Network



International Network

- Bangladesh • Bahrain • China • France • Germany • Iran • Kuwait • Netherlands • Oman • Poland
- Qatar • Russia • Saudi Arabia • Sri Lanka • South Africa • Thailand • Turkey • UAE



Bharat Fritz Werner
Off Turnkur Road, Bangalore 560022, India
Ph: 080-39821100/ 28395745
Fax: 080-28394818, e-mail: bfwmarketing@bfw.co.in | URL: www.bfwindia.com

- Belgaum**
Block 4, Plot 737, Kharapur Road, Near Railway Gate 3, Udyambag, Belgaum 590008
- Chennai**
D22, First Floor, First Street, Sector 3, Ambattur Industrial Estate (South), Chennai - 600058. Ph: (044)26251505. E-mail: bfwchennai@bfw.co.in
- Coimbatore**
7, Karayampalayam Road, Mylapatti (PO) Coimbatore - 641 062. Ph: (0422) 2626694. E-mail: bfwcoimbatore@bfw.co.in
- Gurgaon**
Spaze tech park, office no 769, 7th floor, tower B2, Sector 49, Sohna road, Gurgaon 0- 122018
- Hyderabad**
Flat No 204, 1-11-229, Ramaveeda Srisampada Apt. Near Shyanvala Bldgs, Begumpet, Hyderabad - 500016, Ph: (040) 27762035. E-mail: bfwhyderabad@bfw.co.in
- Kolkata**
D - 4/ 4, Gildanor House, 8, Netaji Subhash Road, Kolkata 700001. Ph: (033) 40102140 - 42, 22623387. Fax: (033) 4005691. E-mail: bfwkolkata@bfw.co.in
- Mumbai**
208, Ramwal Commercial Complex, LBS Marg, Mulund West, Mumbai 400060. Ph: (022) 25653302/ 58. Fax: (033) 40056911. E-mail: bfwmumbai@bfw.co.in
- New Delhi**
510, Mahatta Towers, B - Block, Community Center, Janakpuri, New Delhi 110058. Ph: (011) 25522210. Fax: (011) 4 5629699. E-mail: bfwdelhi@bfw.co.in
- Pune**
BFW House, 124 A, H block, MIDC, Pimpri, Pune 411018. Ph: (020) 02534638. E-mail: bfwpune@bfw.co.in
- Pune Chikan MIDC**
No.3, Vedant Plaza, Plot No. PAP 40841, Phase 1, Chikan MIDC, Near Sazlon Generators Ltd. Pune - 410501
- Puneji**
Suite No 205, 2nd floor, E-195, Industrial Area, Phase - VII B, S A S Nagar, Mohali (Punjab) - 160071
- Rajkot**
85-86, 4th Floor, Samruddhi Bhawan, Opp. Bombay Garage petrol pump, Gondal Road, Rajkot 360002. E-mail: bfwrajkot@bfw.co.in

Representatives at Jamshedpur(Jharkhand) - 938039800, Kolhapur (Maharashtra)- 9570958107, Hosur (Tamilnadu) 9042336169

We are continuously working on the development of our products, the information contained in this brochure is subject to modification. While all efforts have been made to ensure that this publication carries information, the reader is advised to consult an authorised representative of Bharat Fritz Werner to ascertain latest details.