

»»»»» **IVL**

Inverted Vertical Lathe



High Volume & Automated Production

Series: IVL 250 | IVL 400/ 500

www.bfwindia.com

BFW
Bharat Fritz Werner



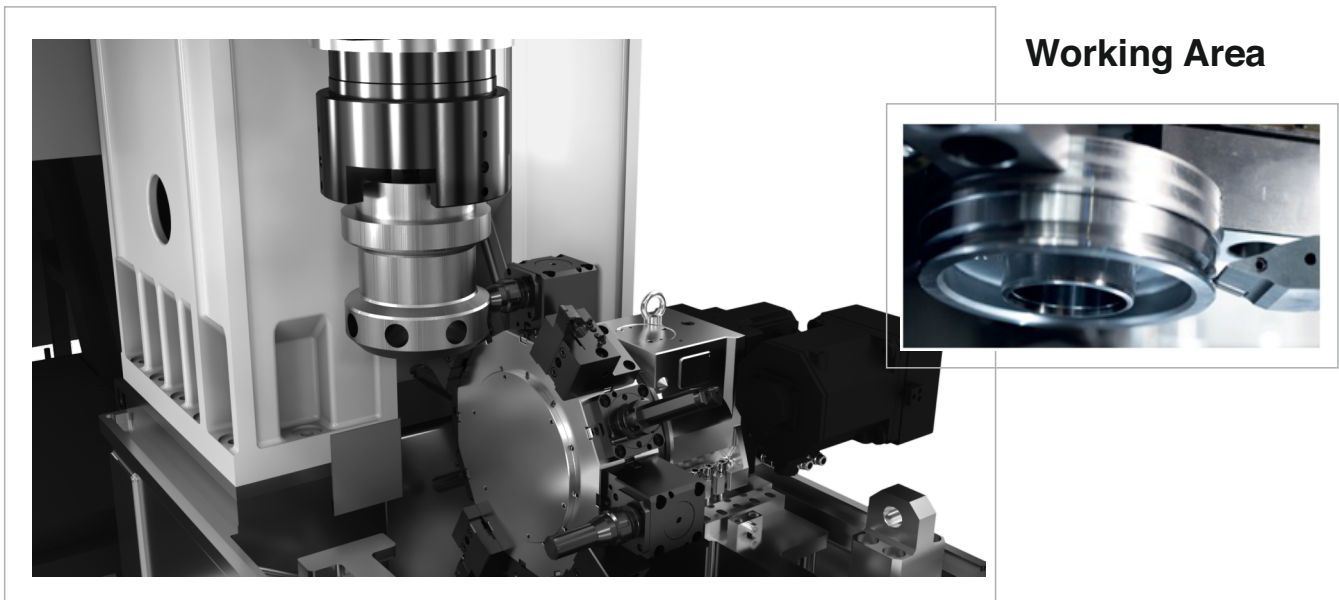
Inverted Vertical Lathes - IVL Series

IVL 250 | IVL 400/ 500

BFW Inverted Vertical Turning Lathes innovated for high-power cutting capabilities with repeatable precision. Components are clamped by the chuck which is mounted on face of the machine spindle. Automatic up-down, clamping, Improved processing & simplified automation helps for competitive manufacturing. Structural rigidity gives stability and superior cutting performance. Ideal selection for the high Volume jobs of Automotive, new era next gen Automotive of EV components and general engineering sectors.

Best-in-class Features listed below:

- A small foot print machines
- Direct pick up component for mass production.
- Automatic self-loading / unloading.
- Short setup times. Easy changeover to different work piece diameters
- Innovative design concept for easy chip disposal
- A narrow width machine design, easily accommodate line setups.



Applications

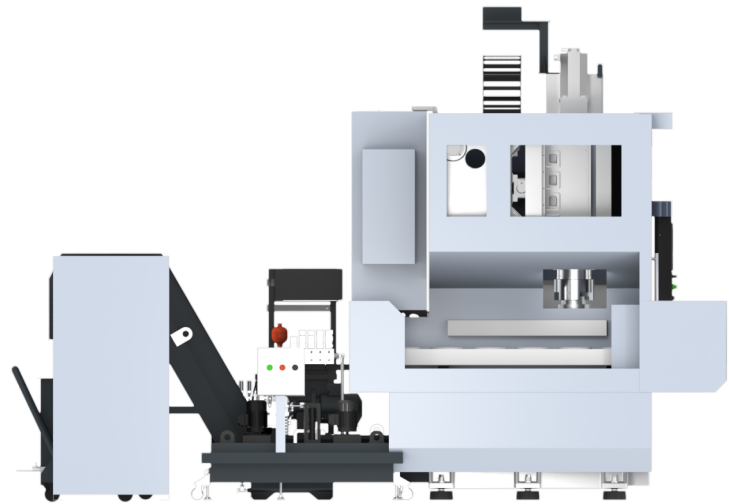


Many more ...

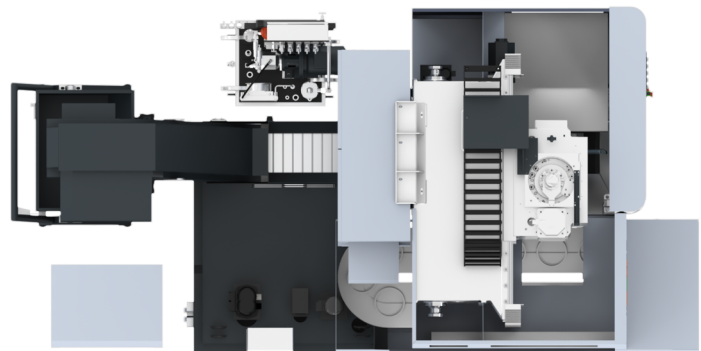
Machine Dimensions



Front View



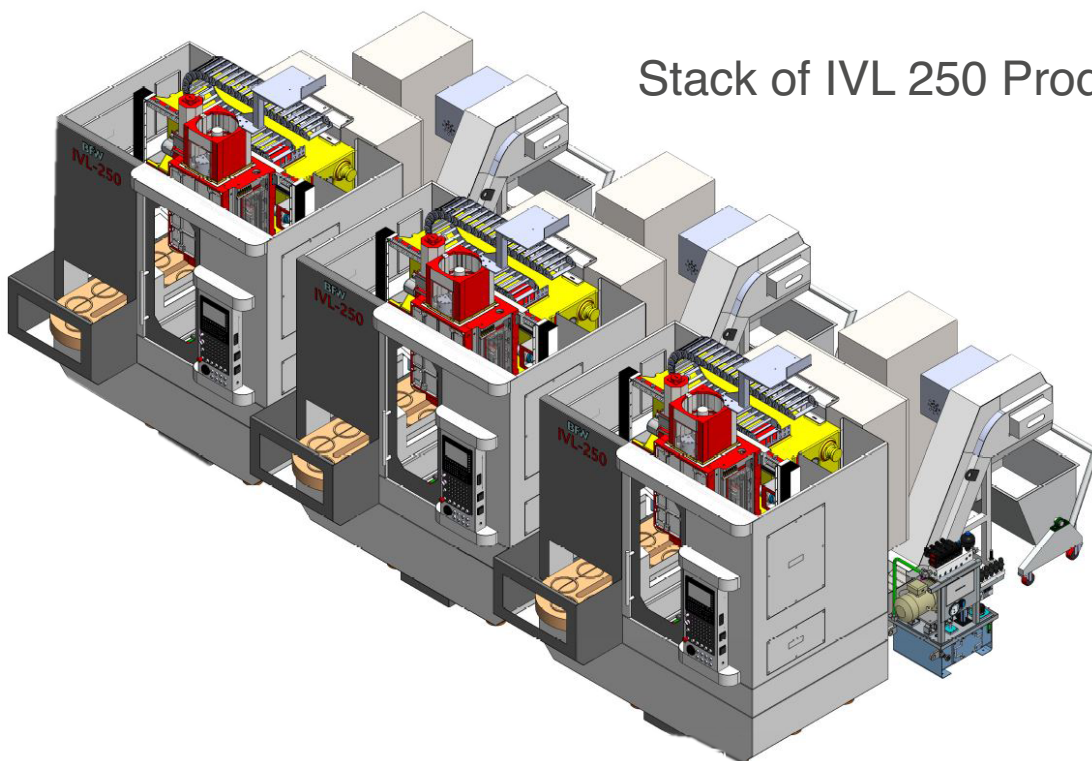
Side View



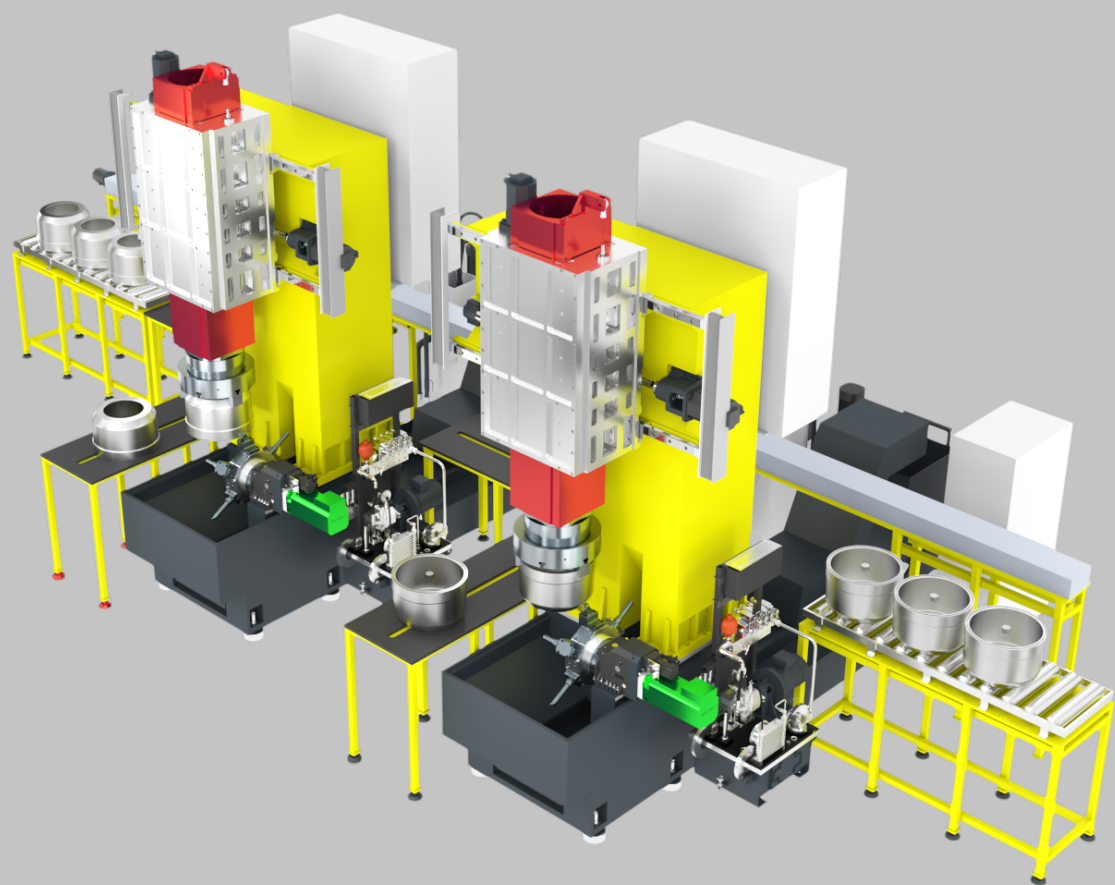
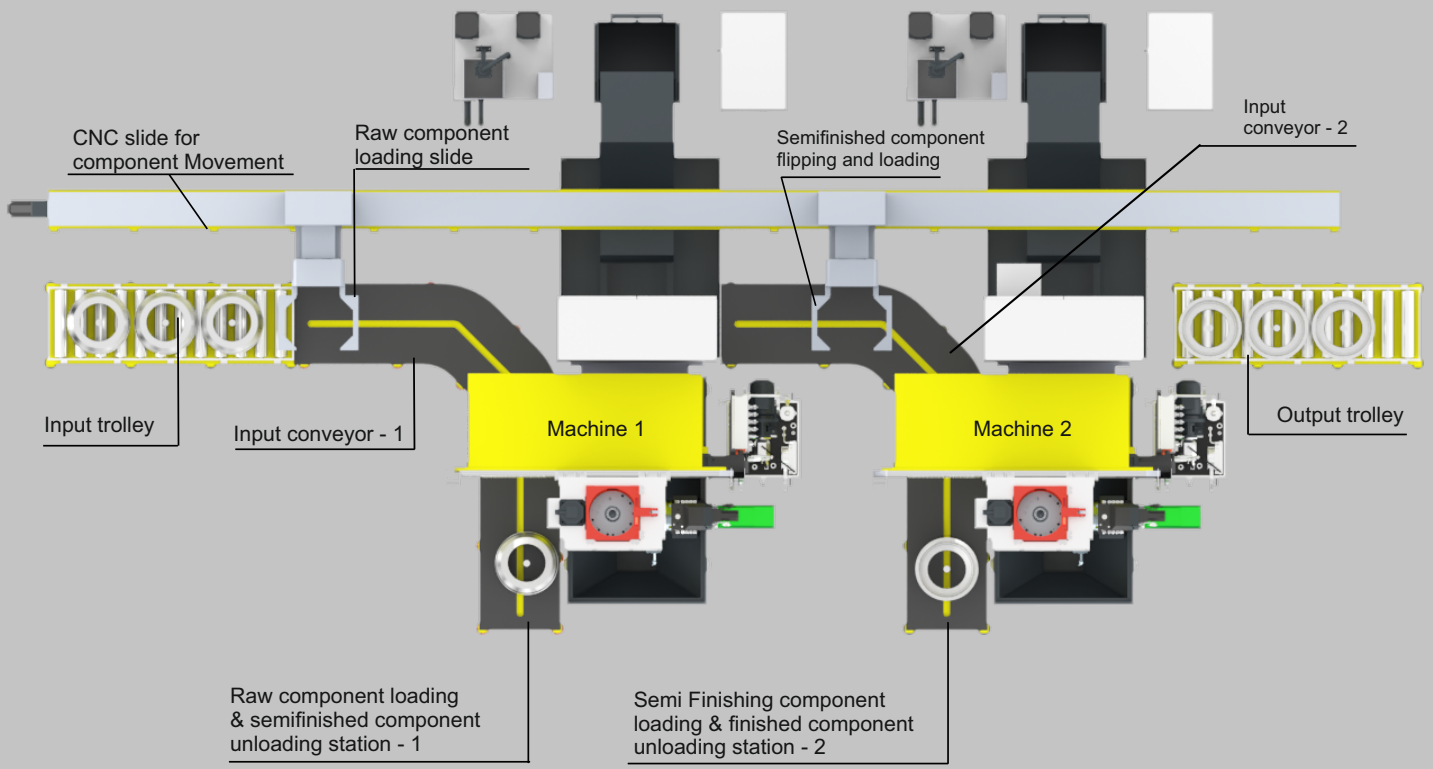
Top View

		IVL 250	IVL 400/ 500
W	mm	~ 2200	~ 2650
L	mm	~ 3800	~ 4200
H	mm	~ 3400	~ 4500

Stack of IVL 250 Production Line



Stack of IVL 500 Production Line for Wheel Drum



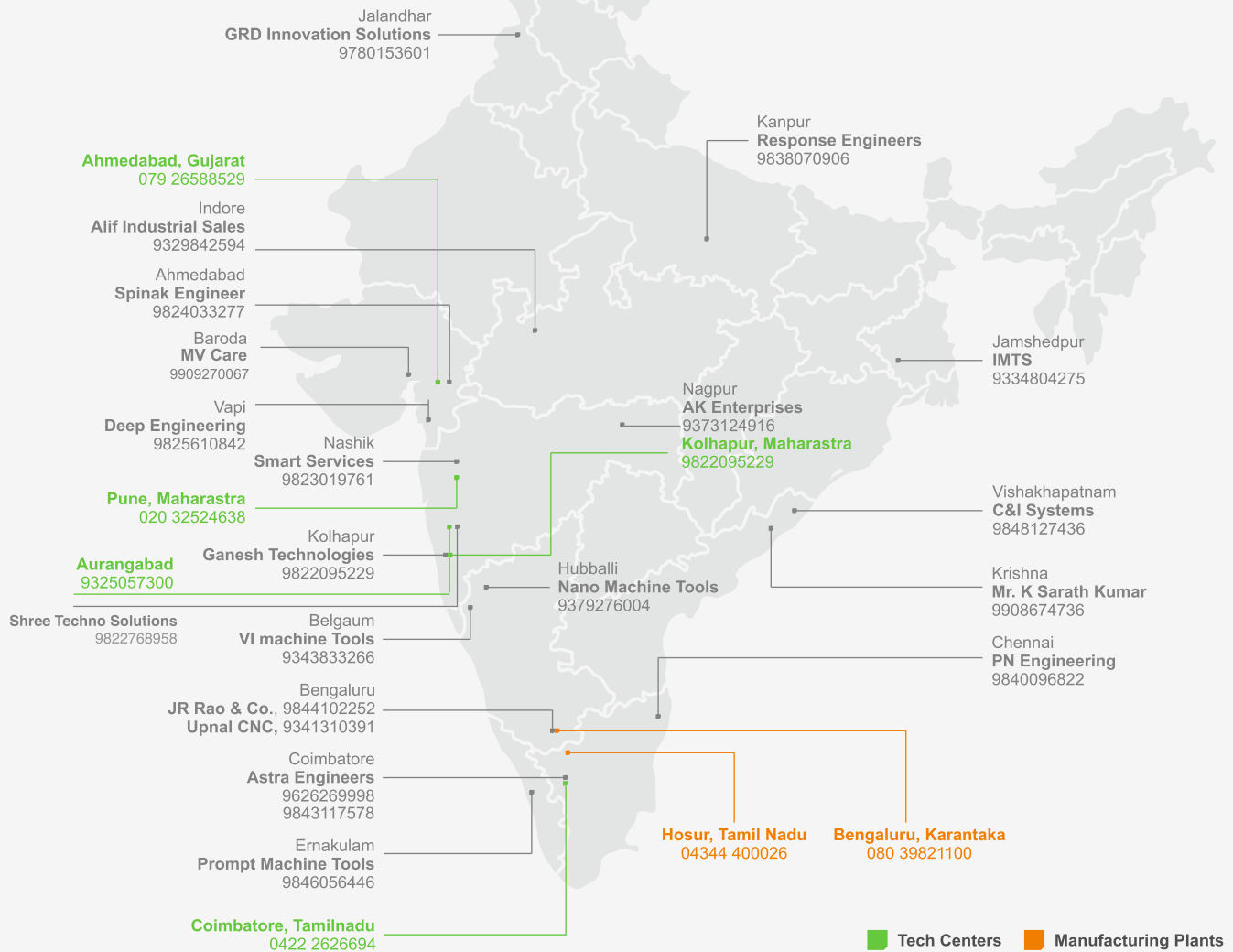
Technical Specifications

	Specifications	Unit	IVL 250	IVL 400/ 500
Capacity	Max. Swing Diameter	mm	Dia 500	Dia 650
	Max. Turning Diameter	mm	Dia 200 (250)	Dia 500
	Max. Turning Length	mm	200	300
	Chuck size	mm	254 (315)	400 /500
Feed	X/ Z stroke	mm	740/ 400	1030/ 580
	X/ Y / Z Rapid Traverse	m/min	60/ 20	60/ 20
	Drive		Servo	Servo
Spindle	Spindle Power - cont./ int - Fanuc (for low winding)	kW	15/22 at 720 rpm	22/ 26 at 420 rpm
	Spindle Power - cont./ int - Fanuc (for High winding)	kW	26/30 at 2200 rpm	30/ 37 at 1750 rpm
	Spindle taper		A2 - 6 (A2-8)	A2 - 11
	Bearing size (Angular contact ball bearing)	mm	Dia 100 for A2-6 (Dia 120 for A2-8)	Dia 150
	Spindle speed max	rpm	4500	3500 for Dia 400 mm 2850 for Dia 500 mm
Turret	Turret [12 station]		DMT -100 (with Live Tools)	
	Tool flight circle	mm	820 (860)	880
	OD Tool Holder	mm	25 x 25	32 x 32
	ID Tool Holder	mm	Dia 40	Dia 50
	Turret Indexing/ Clamping		CNC/ Hydraulic (Live tool motor)	
Hydraulic System	Tank Capacity	Ltrs	40	40
	Pressure	bar	70	70
Coolant System [Chip conveyor Std]	Tank Capacity	Ltrs	200	200
	No. of Pumps		1. Bed wash 2. Flood Coolant	
Lubrication System [Open Circuit Centralized System]	Tank Capacity	Ltrs	2.7	2.7
Chiller [Spindle/ Motor]	Capacity	Kcal/ hr	5000	6000
CNC System	Make		Fanuc Oi TF/ Siemens/ Mitsubishi	
Work Handling on LH side	Type		Elliptical	Elliptical
Installation Data	Min. Loading height	mm	950	950
	Floor Space - W x D x H	mm	2200 x 3800 x ~ 3400	2650 x 4200 x ~ 4500
	Basic Machine Weight	kg	~ 6000	~ 8000

Optional Features

- Linear scales for X & Z axis
- High pressure coolant for turret
- Live tools for turret with C axis for spindle
- Czi sensor for spindle for positioning of C axis
- Component touch probe

Network



International Network

- Bangladesh
- Bahrain
- China
- France
- Germany
- Iran
- Kuwait
- Netherlands
- Oman
- Poland
- Qatar
- Russia
- Saudi Arabia
- Sri Lanka
- South Africa
- Thailand
- Turkey
- UAE



Bharat Fritz Werner
Off Tumkur Road, Bangalore 560022, India
Ph: 080-39821100 | e-mail: bfwmarketing@bfw.co.in | URL: www.bfwindia.com;

Belgaum	Block 4, Plot 737, Khanapur Road, Near Railway Gate 3, Udyambag, Belgaum 590008.
Chennai	D22, First Floor, First Street, Sector 3, Ambattur Industrial Estate (South), Chennai - 600058. Ph: (044)26251505. E-mail: bfwchennai@bfw.co.in
Coimbatore	7, Karayampalayam Road, Mylapatti (PO) Coimbatore - 641 062. Ph (0422) 2626694, E-mail: bfwcoimbatore@bfw.co.in
Gurgaon	Spaze tech park; office no 769, 7th floor, tower B2, Sector 49, Sohna road, Gurgaon 0- 122018
Hyderabad	Flat No 204, 1-11-229, Ramaveda Srisampada Apt. Near Shyamalal Bldgs, Begumpet, Hyderabad - 500016, Ph: (040) 27762035, E-mail: bfwhyderabad@bfw.co.in
Kolkata	D - 4/ 4, Gillander House, 8, Netaji Subhash Road, Kolkata 700001. Ph (033) 40102140 - 42, 22623387, Fax (033) 4005691, E-mail: bfwkolkata@bfw.co.in
Mumbai	206, Runwal Commercial Complex, LBS Marg, Mulund West, Mumbai 400080. Ph: (022) 25653362/ 58. Fax: (033) 40056911. E-mail: bfwmumbai@bfw.co.in
New Delhi	510, Mahatta Towers, B - Block, Community Center, Janakpuri, New Delhi 110058. Ph: (011) 25522210. Fax: (011) 4 5629699. E-mail: bfwdelhi@bfw.co.in
Pune	BFW House, 124 A, H block, MIDC, Pimpri, Pune 411018. Ph: (020) 32524638. E-mail: bfwpune@bfw.co.in
Pune Chakan MIDC	No.3, Vedant Plaza, Plot No. PAP 40&41, Phase 1, Chakan MIDC, Near Suzion Generators Ltd. Pune - 410501
Punjab	Suite No 205, 2nd floor, E-195, Industrial Area, Phase - VIII B, S A S Nagar, Mohali (Punjab) - 160071
Rajkot	85-86, 4th Floor, Samruddhi Bhavan, Opp. Bombay Garage petrol pump, Gondal Road, Rajkot 360002. E-mail: bfwrajkot@bfw.co.in

Representatives at Jamshedpur(Jharkhand) - 938030800, Kolhapur (Maharashtra) - 9370958107, Hosur (Tamilnadu) 9342336169

We are continuously working on the development of our products, the information contained in this brochure is subject to modification. While all efforts have been made to ensure that this publication carries the correct information, the reader is advised to consult an authorised representative of Bharat Fritz Werner to ascertain latest details.

kenark@bfr-wfw/19-09-23